



# Special Order Axle Confirmation

Fax: \_\_\_\_\_ Attn: \_\_\_\_\_

Sold To: \_\_\_\_\_

Ship To: \_\_\_\_\_

Customer Order #: \_\_\_\_\_

Part #: \_\_\_\_\_

Customer Order #: \_\_\_\_\_

Customer PO#: \_\_\_\_\_

From CSR: MIKE

Branch: 12

Branch Fax #: 614-878-2550

Ship via: \_\_\_\_\_

Torflex Axle

Beam Only

Square Tube Only

Axle Tube:  Round (Std)  Square

Spindle:  Short  Long

Brake:  Idler  Idler Flgd

Electric  Single Servo Hyd

Duo Servo Hyd  Freeback

Hyd Disc  w/ Parking Brake

Air  ABS

Spring Brakes  Freeback Marine

Spindle Type:  Straight  4" Drop

6" Drop (3.5K)  EZ Lube

New-R-Lube  Oil

Std Grease  w/ Brake Flange

Cambered:  Yes  No

Drop Center (V-Camber):  Yes  No

Stud Size:  1/2  5/8 Flgd

9/16  5/8 Coned

Capacity: \_\_\_\_\_

Bolt Pattern: \_\_\_\_\_

Hub Face: \_\_\_\_\_

Spring Center/Outside Bracket: \_\_\_\_\_

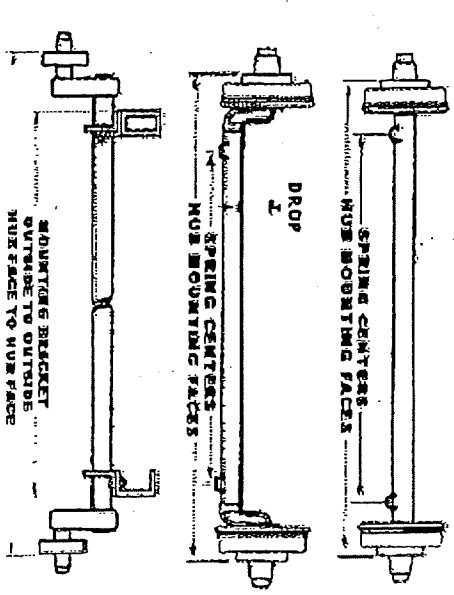
Axle Finish:  Painted (Std)  Galvanized

AP Brackets:  Less AP Brackets (Topmount)

w/ AP Brackets (Sidemount)

Overslung:  Underslung  Hub. Dia. For 2K 545  5.5, 8-12" Wheels  6.5, 12-15" Wheels

Additional Options: \_\_\_\_\_



How Many: \_\_\_\_\_

Price Each: \_\_\_\_\_

THANK YOU FOR YOUR ORDER! TO HELP US AVOID DELAYS AND PROVIDE YOU WITH THE PRODUCTS YOU NEED FOR YOUR PRODUCTION, PLEASE DOUBLE CHECK THE MEASUREMENTS AND ADVISE US OF ANY CORRECTIONS. I VERIFY THAT THE PARTS/AXLES INDICATED ABOVE ARE CORRECT AND ACKNOWLEDGE THAT ALL SPECIAL ORDER AXLES ARE NON-REFUNDABLE AND MAY REQUIRE A DEPOSIT.

Customer Signature (required): \_\_\_\_\_

Date: \_\_\_\_\_

For questions or concerns, contact us at: \_\_\_\_\_

and ask for \_\_\_\_\_

If confirmation & deposit are received by: \_\_\_\_\_

Estimated ship date: \_\_\_\_\_

Form # OPIN - G - 011A

24 December 2009

